

## Anti-siglec9 mIgG1 Antibody(2D4)

### Product information

GM-31414AB-10	10 µg
GM-31414AB-100	100 µg
GM-31414AB-1000	1 mg

### Antibody Information

Species Reactivity	Human; Cynomolgus
Clone	2D4
Source/Isotype	Monoclonal Mouse IgG1, κ
Application	Flow cytometry;
Other Names	CD329, CDw329, FOAP-9, OBBP-LIKE, siglec-9
Gene ID	Q9Y336-1(human); XM_005590083.2(Cynomolgus)
Storage	Store at 2-8°C short term (1-2 weeks).Store at ≤ -20°C long term. Avoid repeated freeze-thaw.
Formulation	Phosphate-buffered solution, pH 7.2.
Endotoxin	< 1 EU/mg, determined by LAL gel clotting assay

### Data Examples

Flow cytometry H\_SIGLEC9 CHO-K1 Cell Line (Catalog # GM-C19110) was stained with Anti-siglec9 mIgG1 Antibody(2D4) or isotype control antibody.

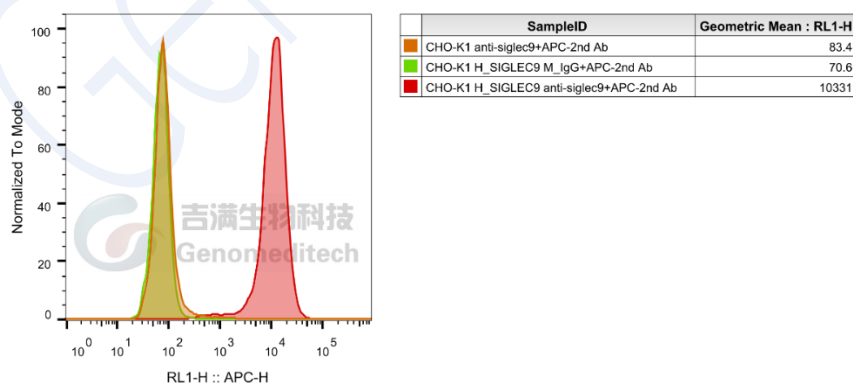
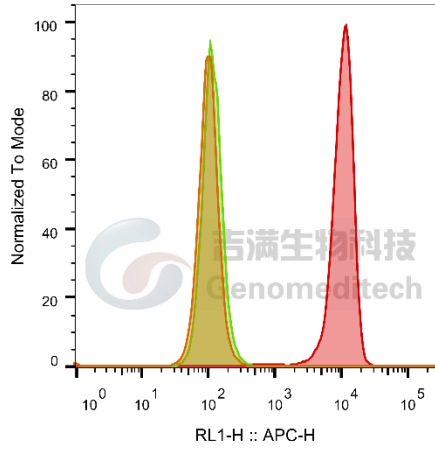


Fig. FACS

Flow cytometry Cynomolgus\_SIGLEC9 CHO-K1 Cell Line (Catalog # GM-C23928) was stained with Anti-siglec9 mIgG1 Antibody(2D4) or isotype control antibody.

Version:0.3.2.240521



SampleID	Geometric Mean : RL1-H
CHO-K1 anti-siglec9+APC-2nd Ab	100
CHO-K1 Cyno_SIGLEC9 M_IgG+APC-2nd Ab	115
CHO-K1 Cyno_SIGLEC9 anti-siglec9+APC-2nd Ab	10070

Fig. FACS

Genomeditech